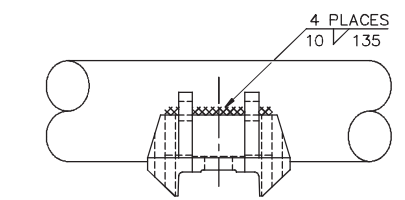
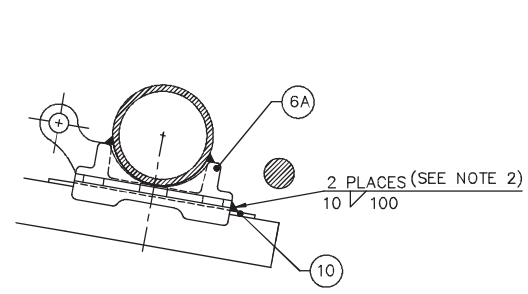
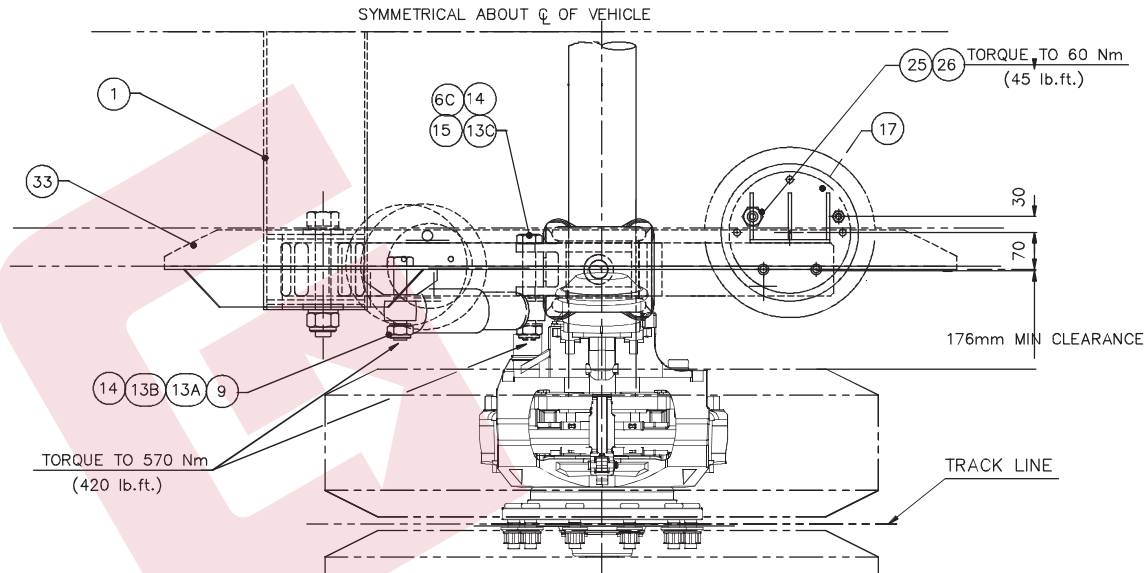


COPYRIGHT © 2001 DR

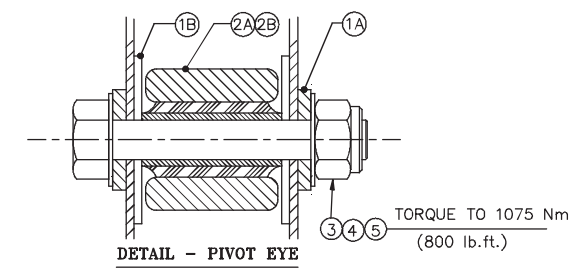
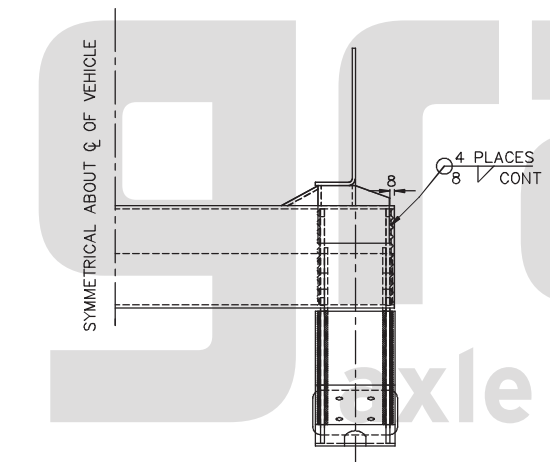
ADVISORY MAX SPRING CENTRES		
MANUFACTURER	CHASSIS WIDTH	SPRING CENTRES
SCANIA	770	744
VOLVO	850	822
RENAULT	850	822
DAF	790	794
MERC	760	776
MAN/ERF	762	746
IVECO	770	762



SADDLE WELDMENT
(NOT TO SCALE)



RECOMMENDED FIXING PATTERN
 MIN 14 - OFF, M16 Grade 10.9
 FLANGED NUTS & BOLTS OR
 PLAIN HEXAGON WITH WASHERS.
 TORQUE TO 250 Nm (180 lb.ft.)



NOTE 1
 AXLE TUBE SHOULD BE PRE-HEATED IF AMBIENT TEMPERATURE IS LESS THAN 68°F, 20°C.

NOTE 2
 WELD AFTER TRACKING AXLE. PROTECT SPRING BEAM FROM ARCING AND SPATTER.

NOTE 3
 ALL BOLTS TO BE TORQUED WITH SUSPENSION IN RIDE HEIGHT POSITION

NOTE 4
 INSTALLER TO PACK AIRSPRING TO THIS DIMENSION

NOTE 5
 INSTALLER TO PACK THE PIVOT EYE CROSSMEMBER TO THIS DIMENSION TO GIVE REQUIRED RIDE HEIGHT

MODEL	DIM 'A'	DIM 'B'	DIM 'C'	DIM 'D'
RT20-85/95	180	155	242	0
	225	205	292	50
	275	255	342	100

DO NOT SCALE - IF IN DOUBT ASK
 THIRD ANGLE PROJECTION
 ALL DIMENSIONS ARE IN MILLIMETRES
 ORIGINAL FRAME SIZE 809mm x 562mm

DESIGNED FOR
 RETRO - TAG AXLE CONVERSIONS - 9500kg

DRAWN BY J HUDSTON
 DATE 16 FEB 06

UNSPECIFIED TOLERANCES
 NO DECIMALS ± 1mm
 ONE ± 0.5mm
 TWO ± 0.2mm
 ANGULAR ± 0° - 3'

ALL ALTERATIONS TO BE VIA CAD WEIGHT ESTIMATED ACTUAL

DISPOSITION	DATE	BY
MAX SPRING CENTRE TABLE	16 FEB 06	PS
PLATE TO CRANK	16 FEB 06	JH
1ST ISSUE	16 FEB 06	JH
SUFF CHANGE & REASON		
DISP		
ORIGIN		
BY		
DATE		
MODIFICATIONS		

Granning UK Ltd.
 Unit 37, Millford Court, Hardwick Grange,
 Warrington, Cheshire, WA1 4EZ, England.

GRANNING UK LTD. CLAIMS PROPRIETARY RIGHTS TO ALL THE INFORMATION DISCLOSED ON THIS DRAWING. IT IS NOT TO BE REPRODUCED OR USED FOR MANUFACTURE OR FOR ANY OTHER PURPOSE OR DISCLOSED TO ANY THIRD PARTY WITHOUT OUR WRITTEN PERMISSION.

MATERIAL
 SEE BILL OF MATERIALS
 FINISH

TITLE
 INSTALLATION
 RT 20/30 - 95

DRAWING NO. 18272
 SHEET 1 OF 1 | A1